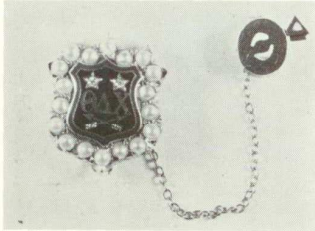


THETA DELTA CHI

Nearby Rink Makes Ice Skating a Favorite

Founded June 2, 1906



Alden T. Foster
President

For the brothers at 314 Memorial Drive, this year started off right with the addition of a fine new pledge class. By being active in such varied interests as crew tennis, *Voo Doo*, Band, and Freshman Council, they are making a solid contribution to the house.

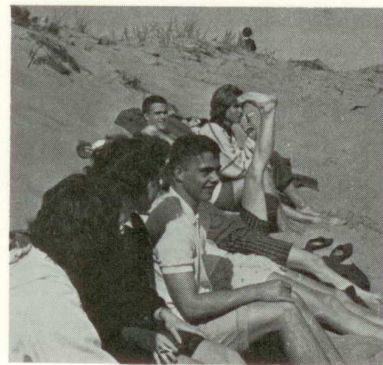
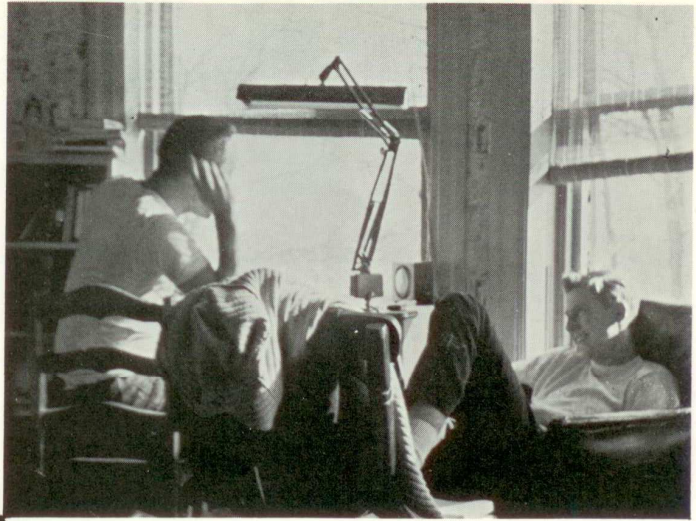
The brothers were especially proud when George Kirk was named Athlete of the Year for 1959-60 last June. This year Theta Deltis are active in wrestling, hockey tennis, lacrosse, squash, and crew. In intramurals we put out strong teams in hockey, sailing, and squash. Hockey is still by far the most popular sport and has a large following of brothers and dates.

After the acquaintance dances had given some of us a chance to find "The Girl," the brothers gave a very successful dance in honor of the pledges. Socially, the trend again was in favor of informal parties, such as a square dance, a calypso party, and a gambling party.

That the fraternity as a whole succeeded in combining good times with serious studying was evidenced by the fact that we ranked high scholastically among the living groups on campus last year. But most important, the bonds of friendship were strengthened by another year of living and working together.



of Brothers and Dates



First Row: M. Ormond, B. Peterson, H. Baya, W. Burns, R. Vickery, President A. Foster, J. Kee, T. Neal, R. Bechtol, R. Leanza. Second Row: J. Dodge, C. Northrop, J. LaPrade, J. Williamson, D. McCallum, P. McCormick, J. Becker, T. Chatwin, M. McLatchy, A. Stokes. Third

Row: A. Starr, T. Layher, J. LaGraff, P. Angevine, R. Budny, D. Fahrland, P. Townsend, R. Kane, J. Sinclair, H. Dewey. Missing: P. Robb, R. Conant, R. Strube, W. Vachon.

